

A modern, minimalist interior space featuring large, multi-paned windows that offer a view of a city skyline. The room has a high ceiling with exposed concrete beams and large, horizontal metal ducts. The walls are a mix of white and red brick. The floor is covered in light-colored wood-look LVT flooring. In the foreground, there is a large, round, light-colored beanbag chair. To the right, a white sofa is partially visible, accompanied by a small, round, black metal coffee table with a wooden top. On the coffee table, there is a small wooden box and a vase with pink flowers. A grey blanket is draped over a smaller, round, light-colored beanbag chair in the middle ground.

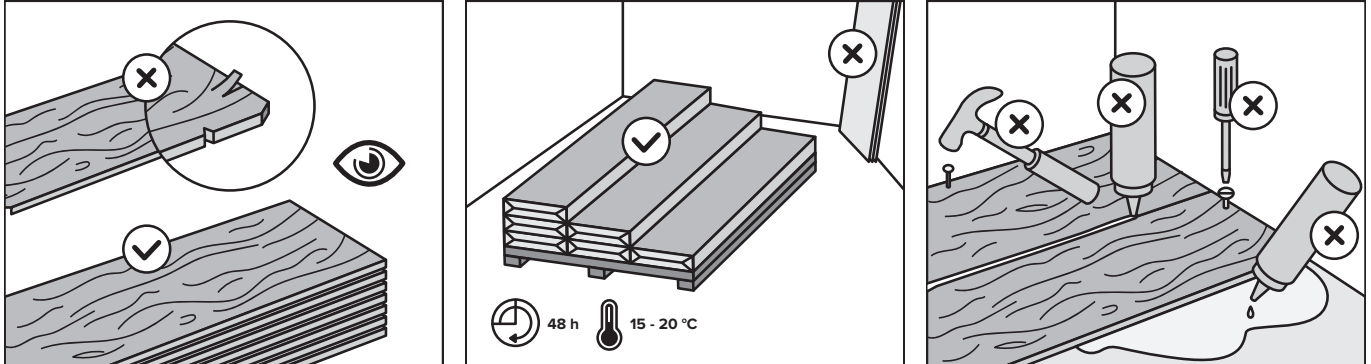
Installation advice **Dryback LVT flooring**

.....

belakos
1960

1. Storage and shipping

Make sure that all materials are stored and transported on a level and sturdy surface, laid flat and in neat stacks. Materials should not be stored in extremely cold (temperatures below 2°C) or hot (temperatures above 40 °C) spaces, or damp environments.

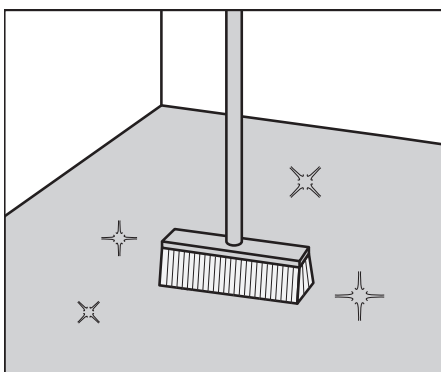


2. Prior to installation

Inspect the product: Do the colours match those you ordered; are the quantities correct and is there no visible damage to the packaging? While laying the floor, check for any visible defects and do not use any planks or tiles that show imperfections.

Acclimatisation: To prevent warping, allow your LVT floor to acclimatise by laying the strips on the floor at room temperature for 24 hours. Remove the planks or tiles from their packaging and stack them in low, straight stacks, away from heating or cooling elements, or windows through which direct sunlight enters the room.

Underfloor heating: If you have underfloor heating make sure that the underfloor heating is off for 24 hours before and up to 72 hours after the installation of your new floor. After laying the floor, be sure to observe the start-up protocol!



Subfloor: The type of subfloor, its quality and any pre-treatment will have a major impact on the final result. To avoid irregularities in the LVT floor, the substrate must be clean and flat, free of dust, permanently dry and normally porous. Each type of subfloor requires a special treatment to make the floor flat, smooth and stable before installing LVT floors.

Levelling: To level the subfloor we recommend the use of Uzin products. For more information, visit: www.uzin.nl.

ANY IRREGULARITY ON THE SUBFLOOR MAY NOT EXCEED 2 MM MEASURED OVER A WIDTH OF 200 CM.

The permissible moisture content of the subfloor is:

- Unheated cement screed less than 2.0 CM% - 75% RH (UK)
- Cement screed with underfloor heating less than 1.8 CM% - 75% RH (UK)
- Unheated anhydrite (calcium sulphate) screed less than 0.5 CM%
- Anhydrite (calcium sulphate) screed with underfloor heating less than 0.3 CM%

Concrete poured directly onto the ground and stone screeds must be provided with an efficient damp-proof membrane (DPM) in accordance with national standards for the installation of resilient floor coverings. Follow the manufacturer's detailed instructions for the installation of a DPM and the use of levelling compound.

3. Installation conditions

Take the climatic conditions and the temperature of your job site into account. The instructions are based on average climatic conditions. Optimal adhesion will be achieved if you have determined by way of experiment that the adhesive has been spread over approx. 80% of the backside of the floor.

Damp areas: The installation of Belakos LVT floors is subject to strict rules when installed in a damp area. The floor is not suitable for installation near a rain shower, for example.

Please observe the following rules:

- Use a subfloor that is suitable for LVT and damp areas.
- Take into account the space needed to accommodate expansion joints.
- Do not seal the floor with sealant. This prevents the floor from naturally expanding and shrinking, increasing the risk of shrinkage and expansion seams.

4. Installation and finishing

The ideal laying temperature is around 18°C and the humidity level should not exceed 70%. Too low temperatures and/or a too high humidity will cause difficult use and poor bonding of the adhesive. Direct sunlight should be avoided during and after laying the floor so that the LVT can act on the adhesive.

Adhesive: We only recommend using adhesives that are particularly suitable for LVT. Follow the advice below*. Apply the adhesive with an adhesive comb according to the prescribed serration.

Adhesive	Description	Serration TKB	Use in g/m ²
UZIN KE 66	Synthetic resin dispersion, solvent-free, EMI-CODE EC 1 PLUS, Blauer Engels according to RAL UZ 113, fibre-reinforced, high initial adhesion, short processing time	A2	300-350
UZIN KE 2000 S	Synthetic resin dispersion, solvent-free with long processing time, EMI-CODE EC 1 PLUS, Blauer Engels according to RAL UZ 113	A2	275-325
UZIN KR 430	2-C-Polyurethane adhesive, solvent-free, very high final adhesion and resistance, EMI-CODE EC 1 PLUS,	A1	300

*Read the installation advice on our website to select the most suitable adhesive for your type of LVT.

Adhesive stains: Do not use solvents to remove adhesive stains. Remove them immediately with a damp cloth. Dried adhesive stains can be removed with soap and water. Use a soft scrubbing sponge if necessary.

LVT can best be cut to size using a sharp Stanley knife. Use a straight or slightly curved knife.

Laying methods

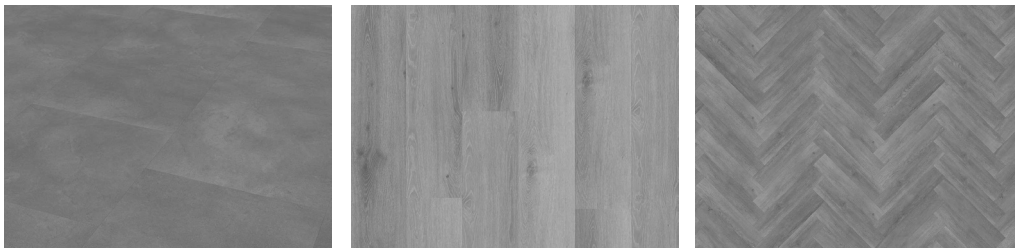
Measure the area where the floor is to be laid and decide how to best lay the strips. You will obtain the best result if the strips are of identical width at both sides of the room. Make a straight line in the exact centre of the room, from where you will start laying the strips.

LVT floors can be laid according to three patterns:

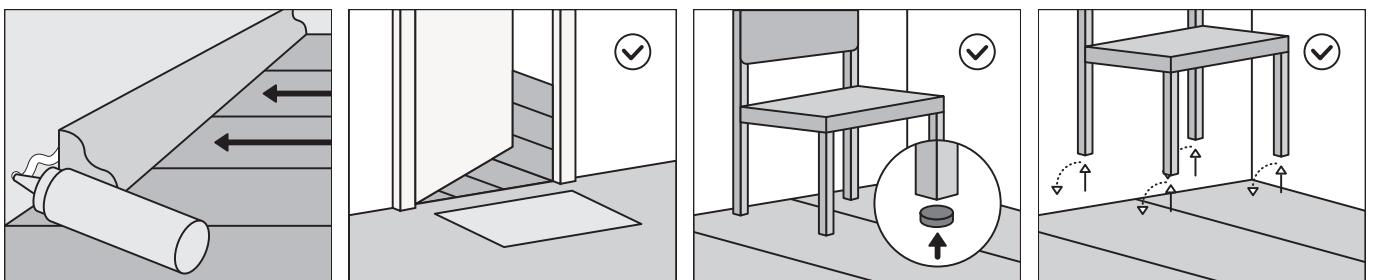
Irregular bond: When laying an irregular bond pattern, the planks should not be laid in uniform sequence, but staggered criss-cross fashion. This method is used quite frequently and produces a beautiful result!

Running bond: The running bond is a laying pattern in which you alternate whole and half strips, starting with a whole strip. The result is a continuous pattern.

Herringbone: The strips are laid at an angle of 90 degrees. If you wish, you can finish the edges with a straight strip.



5. Use of LVT floors



Protection: After the floor has been installed, you must avoid walking on your new LVT floor to the greatest extent possible for 72 hours so that the tiles or strips and adhesive can stabilise at a constant temperature between 18 and 27°C.

Underfloor heating: At least 72 hours after completing the installation of your LVT floor, the water temperature can be increased gradually in small steps of 5°C per day until a maximum temperature of 27°C has been reached.

First contact with water: Prevent the floor from contact with water (e.g. for cleaning purposes) for at least 72 hours following its installation. After this, the adhesive will be sufficiently resistant to water so that its adhesive strength will no longer be endangered.

Protection: Apply proper protection beneath your furniture. We recommend fitting your furniture with soft caps. Do not use felt, because dirt can accumulate under felt, which can scratch your floor.

6. Maintenance

Belakos LVT floors are known for their high quality, durability and beauty. In order to retain its beautiful appearance, it is advisable that you maintain your floor properly. For the best result we recommend James products (www.james.eu).

Download the maintenance advice from our website and read how and with what products you can keep your Belakos floor in tiptop condition. **www.belakos.nl**

Belakos

De Blokmat 15
8281 JH GENEMUIDEN
www.belakos.nl
info@belakos.nl
+31 (0)38 38 54 622

09/2020 | v1.0

